



THE S STUDIO LINE

FROM **SONEAR**[®]



- **ABOUT SONEAR.**
THE METAMORPHOSIS



A prestigious interior solutions company, certified an ISO 9001:2000.

Sonear is one of the largest and leading manufacturers of decorative plywood and veneers in the nation.

With a legacy that spans more than three decades, it is a name that represents absolute commitment and years of unwavering trust.

Having grown up to earn the trust of our patrons by constantly raising the bar of quality and consistency, we have always been on the journey of making newer discoveries and conquering greater frontiers. While our foundations are built on the strength of our solid traditions, we have always moved swiftly with our natural flow for new ground-breaking design solutions and ever-evolving contemporary patterns to beautify your surroundings. Be it a home or an office, we have constantly offered the finest interior décor solutions to help you upgrade to your signature look, epitomizing creativity and inspiring confidence.





VENEERS USED ON THE WALL & PANEL: SPADE MIDNIGHT GLORRY & SLATE ITALIAN GROOVES



SPADE MIDNIGHT GLORRY



SLATE ITALIAN GROOVES



ZIRICOTE



EBIARA

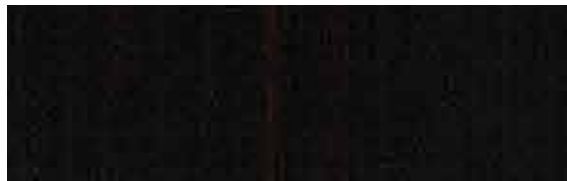


VENEERS USED ON THE WALL, CEILING & CABINET: ZIRICOTE & EBIARA





VENEER USED ON THE COUNTER: SMOKE CHESTNUT



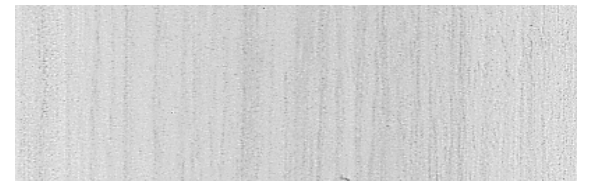
SMOKE CHESTNUT



VENEERS USED ON THE WALL: BACOTE & KOTO WHITE



BACOTE



KOTO WHITE



VENEERS USED ON THE UPPER KITCHEN CABINET, LOWER KITCHEN CABINET, WALL & TABLE:
CHARCOAL DOVE BURL, SMOKE LARCH & ANIGRE



SMOKE LARCH



CHARCOAL DOVE BURL



ANIGRE



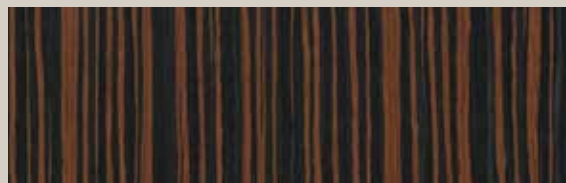
VENEERS USED ON THE TABLE & SEATS: SMOKE EUCALYPTUS & CUBA EBONY



VENEERS USED ON THE CABINET, SIDE WALL & BACK WALL: BURNT VINTAGE BRONZE & AMBER WOOD



SMOKE EUCALYPTUS



CUBA EBONY



BURNT VINTAGE BRONZE



AMBER WOOD





VENEERS USED ON THE WALL: WALNUT BURL

ROYALS

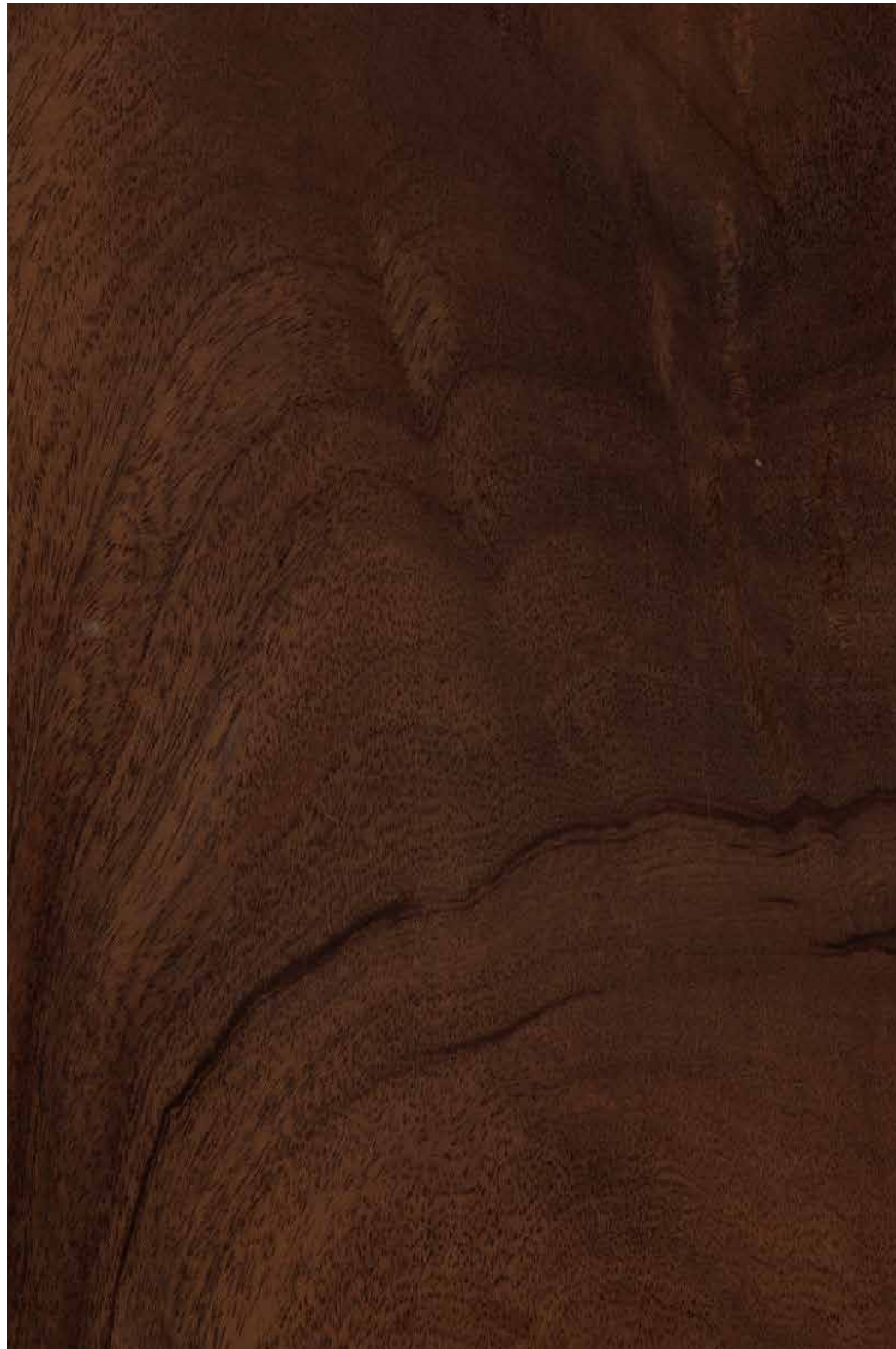
Upscale and classy, these veneers are intended for those who expect and appreciate the best. Available in a wide range of wonderful designs, their patterns will add a touch of exquisiteness to your furniture and interior.



WALNUT BURL



ASH BURL



MAHOGANY CROTCH



SMOKE EBENTOS



ZIRICOTE



BACOTE



EBONY



SANTOS PALISSANDRE



LOURO PRETO



ROYAL WHITE EBONY

NATURAL TINTS

Crafted with impeccable quality and precision, each veneer undergoes a rigorous process to enhance its natural beauty, consistency and durability. The resultant products bring out the pristine hue of the forests from which they are sourced, adding a whole new level of natural glow to your interiors.



BURNT DEVILS KITCHEN



MERCURY MOUNTAIN TIGER



SLATE ROYAL GLORRY



SPADE MIDNIGHT GLORRY



BURNT VINTAGE BRONZE



BURNT ROASTED POMELLE



SPADE GOTHIC POMELLE



CARABIAN MONTEGO SHEEN



SLATE FEROCIOUS BURL



CARABIAN EXOTIC BURL



CHARCOAL DOVE BURL



HAZELNUT SHORE LINE (H)



CHARCOAL RIVERA (H)



BURNT JUNGLI SHER (H)



CIGAR WAVY BRONZO (H)



BURNT ENCHANTED SLAB



SLATE PERYLENE SLAB



MOCHA URBAN GLACIA



SLATE ITALIAN GROOVES



CIGAR FIGURED BAVARIAN



CHARCOAL MAJESTIC GREY



PLATINO KNOTTY PINE



CIGAR URBAN WOOD



CARABIAN VINTAGE KNOTTS

STONE

Bring home the charm of ancient stones with a modern innovative touch. Light weight and flexible, the textures and infinite shades of natural stones give these veneers a unique personality and a bold character.



AMBER WOOD



GLAZED AUBURN





BROWN RHINESTONE



OCHRE GRAVE

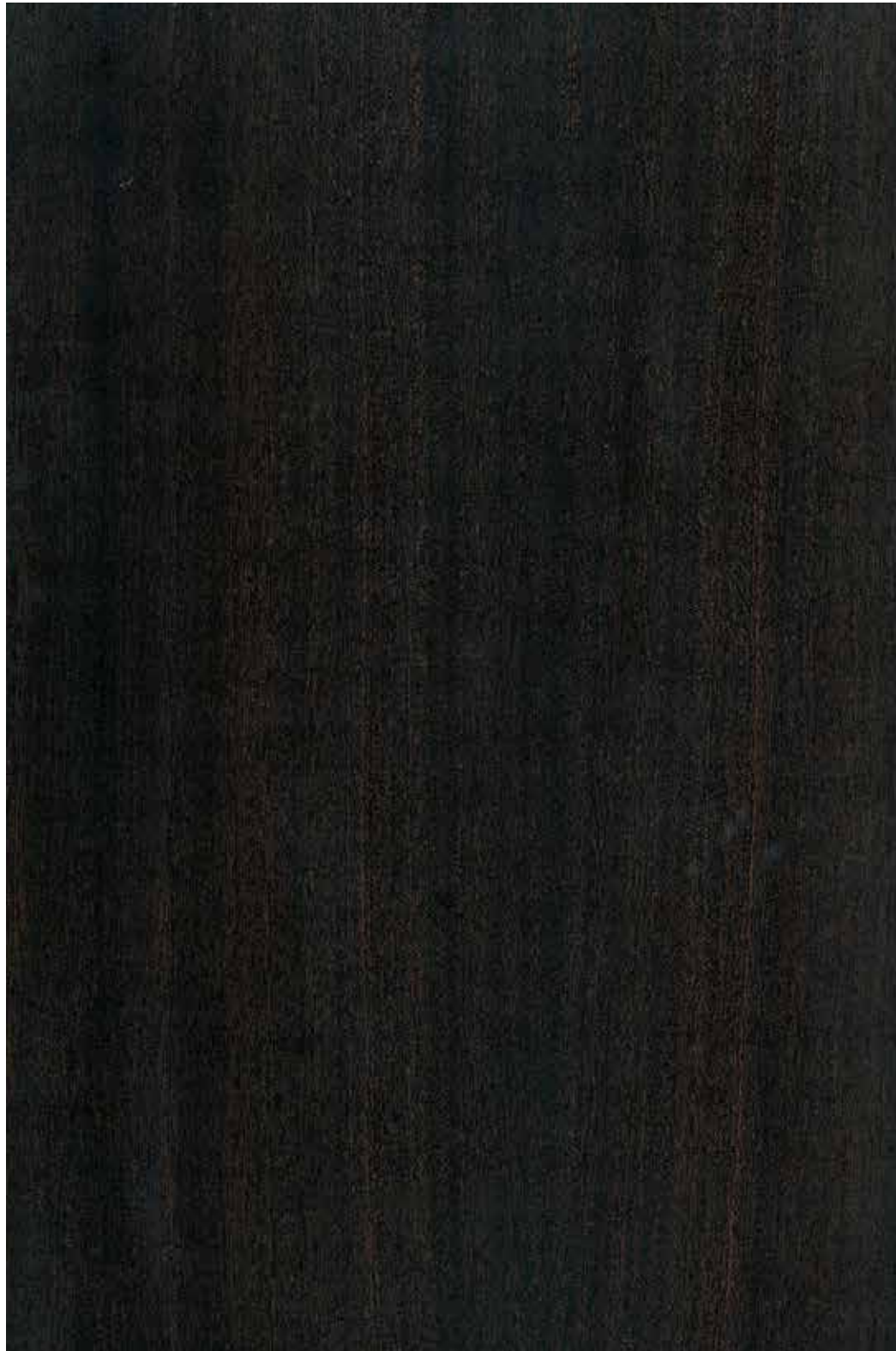


FUMA

Designed to look beautifully modern, Fuma veneers will inspire you to try out some refreshingly new looks for your interiors and furniture. Crafted to perfection, their earthy beauty and timeless appeal will speak an avant- garde language of style that will keep you charmed for a long time.



SMOKE EUCALYPTUS



SMOKE SAPELI (Q)



SMOKE OAK



SMOKE LARCH



SMOKE MAKORE



SMOKE KNOTTY PINE



SMOKE GREEK EBONY



SMOKE SILVER OAK



SMOKE WALNUT



SMOKE ETIMOE



SMOKE DUSKY WALNUT



SMOKE EBIARA



SMOKE AFROMOSIA (C)



SMOKE DANIELLA



SMOKED GRISARD



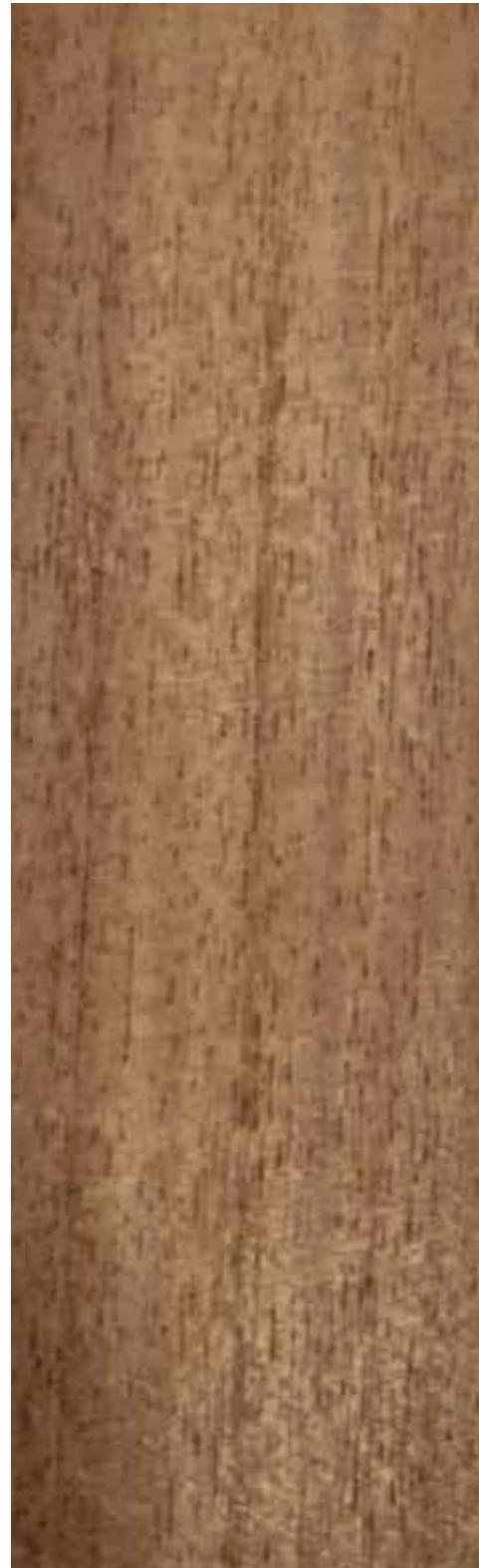
SMOKE GONZALO ALVES



SMOKE RED ELM



SMOKE BUBINGA



SMOKE RED CEDAR



SMOKE CHERRY



SMOKE DEBETU (C)



SMOKE JATOBA



SMOKE CHESTNUT



VENEER USED ON THE TABLE: SMOKE EUCALYPTUS POMELLE

EXOTIC

Bringing out the natural elegance of the exotic forests, the understated style and grace of these veneers create a sophisticated allure.

The finesse and glamour oozed by these veneers make them very popular with interior designers all over the world.



SMOKE EUCALYPTUS POMELLE



Used for primarily decorative purposes, Smoked Eucalyptus Pomelle is perhaps the most beautiful and eye-catching of all Eucalyptus surfaces. It is where the exotic patterns are augmented with bold to dark brown or chocolaty shades. Full of burls and busyness in grains, the gorgeousness of this product makes justice to its classification as a semiprecious wood.



FIGURED ASH



FIGURED SYCAMORE



FIGURED ANIGRE



SAPELI POMELLE





FIGURED EUCALYPTUS



FIGURED DANIELLA



FIGURED CURUPIXA



SMOKE FIGURED EUCALYPTUS



BUBINGA POMELLE



EUCALYPTUS POMELLE

UNCUT VENEERS

Beauty of this category of veneer lies in its imperfections, which are carefully orchestrated to create an unparalleled allure. Exhibiting a modern, comfortable look, they will impart exclusivity to your interiors like no other.



SMOKE KNOTTY LARCH



RUSTIC WALNUT



SMOKE RUGGED OAK



SMOKE RUGGED EUCALYPTUS



RUGGED OAK



RUSTIC ROSEWOOD



RUSTIC SMOKE OAK



LIVE TREE



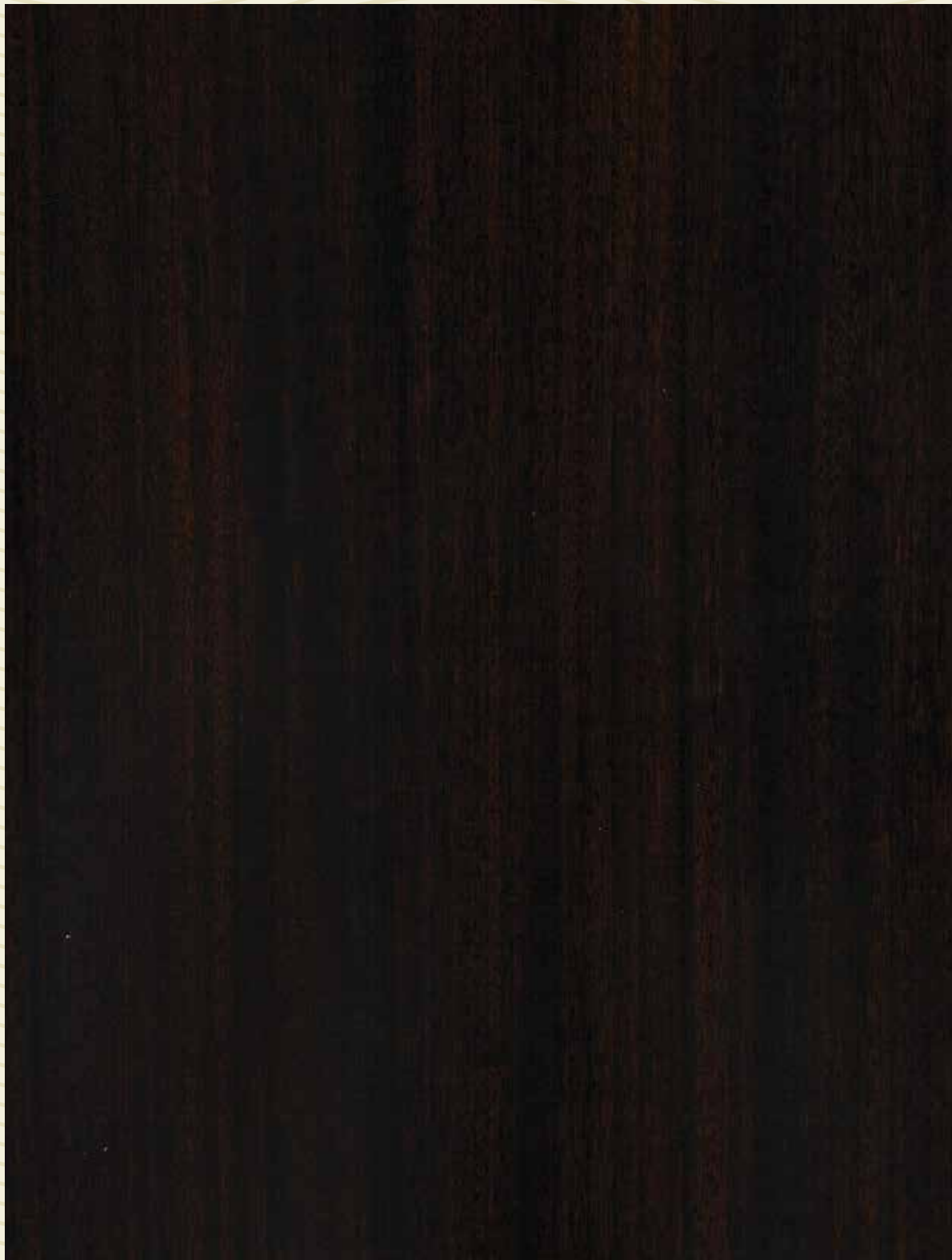
VENEERS USED ON THE WALL & THE PANEL: RUSTIC ROSEWOOD & RUSTIC SMOKE OAK

VENEERS USED ON THE CABINET & VASE: AZZARO IPE & SMOKE WALNUT



YIN & YANG

Nothing compliments aesthetics more than the perfect harmony of beauty with elegance as displayed by these veneers. Because some things are meant to be forever, these veneers will give your interiors an eternal appeal with a touch of stylish serenity.



AZZARO IPE



A true connoisseur's item from tropical South America, the Azzaro IPE category includes woods that are highly prized for their strength, appearance and economical maintenance. They are well-known around the world for their long durability that does not need any expensive processes. Their pleasing looks add to their desirability, with colours ranging from reddish brown to sometimes a bit brighter hues with darker or lighter stripping. They are rated as one of the best types of woods that are naturally resistant to fire, with the same "Class A" rating that steel and concrete get. These woods age very gracefully, with insects, rot and UV damage not appearing at all during the first 20 to 30 years of outdoor use.



SUCUPIRA



SAPELI (Q)



KNOTTY PINE



ROYAL TEAK



APPLE TREE



CHESTNUT



AZZARO IPE (Q)



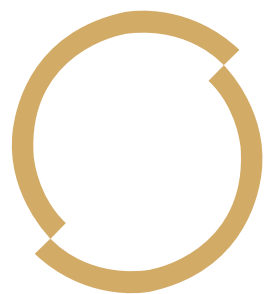
AFRICAN MAHOGANY



DUSKY WALNUT



AFRICAN EBONY



THE S STUDIO LINE
FROM **SONEAR**



DANIELLA



SILVER OAK



ETIMOE



AMERICAN WALNUT (C)



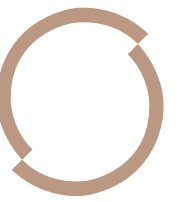
RED ELM



WENGE (Q)



AMERICAN WALNUT (Q)



OLIVE ASH



SAPLEI (C)



WENGE (C)



SAPGUM



TINEO



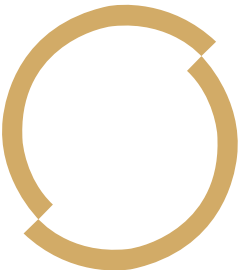
AMERICAN CHERRY



MAKORE



VENEER USED ON THE CUPBOARD: RED ELM (C)



THE S STUDIO LINE
FROM **SONEAR**[®]



RED ELM (C)



ZEBRANO



ROSE WOOD



EBIARA



BRAZILIAN ROXINIO



KOTO



GOLDEN CEDAR



WHITE OAK



AFROMOSIA (C)



RED GUM



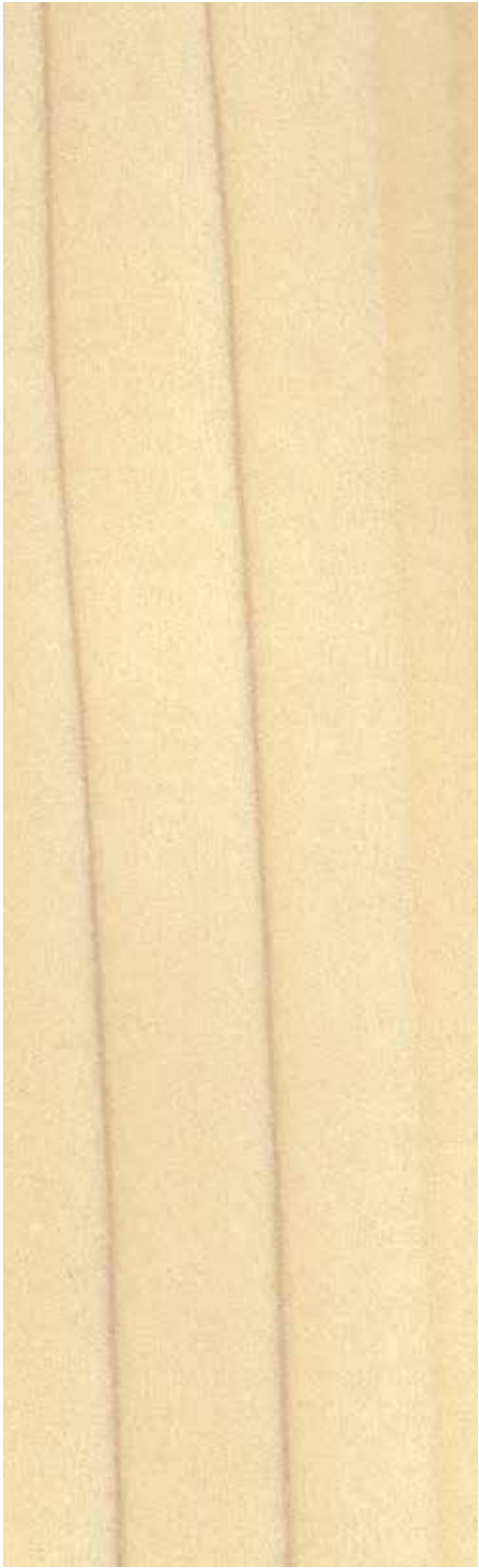
GOLDEN MAPLE



SYCAMORE



AMERICAN MAPLE



TULIP



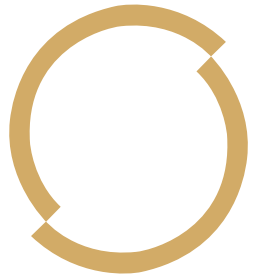
WHITE OAK (Q)



RED OAK



RED OAK (C)



THE S STUDIO LINE
FROM **SONEAR**



WHITE BEECH



ANIGRE



STEAM BEECH



AFROMOSIA (Q)



TAVERI



CHEN CHEN





BLACK & WHITE EBONY



PACIFIC ANGELIM



DEBETU



BAMBOO



RED CEDAR



PRECIOUS BEECH



MAPPA BURL



THE S STUDIO LINE
FROM **SONEAR**

VENEERS USED ON THE WALL & PANEL: BURNT DEVILS KITCHEN & JATOBA



GONZALO ALVES



BRAZILIAN LACEWOOD



JATOBA



BUBINGA (Q)

TEAK

Made from the best quality Burma Teak, the colours of this veneer category are compatible with any kind of polish. What's more, the beautifully patterned textures and soothing shades bestow an old-world grandeur to your furniture and interiors.



MYANMAR TEAK



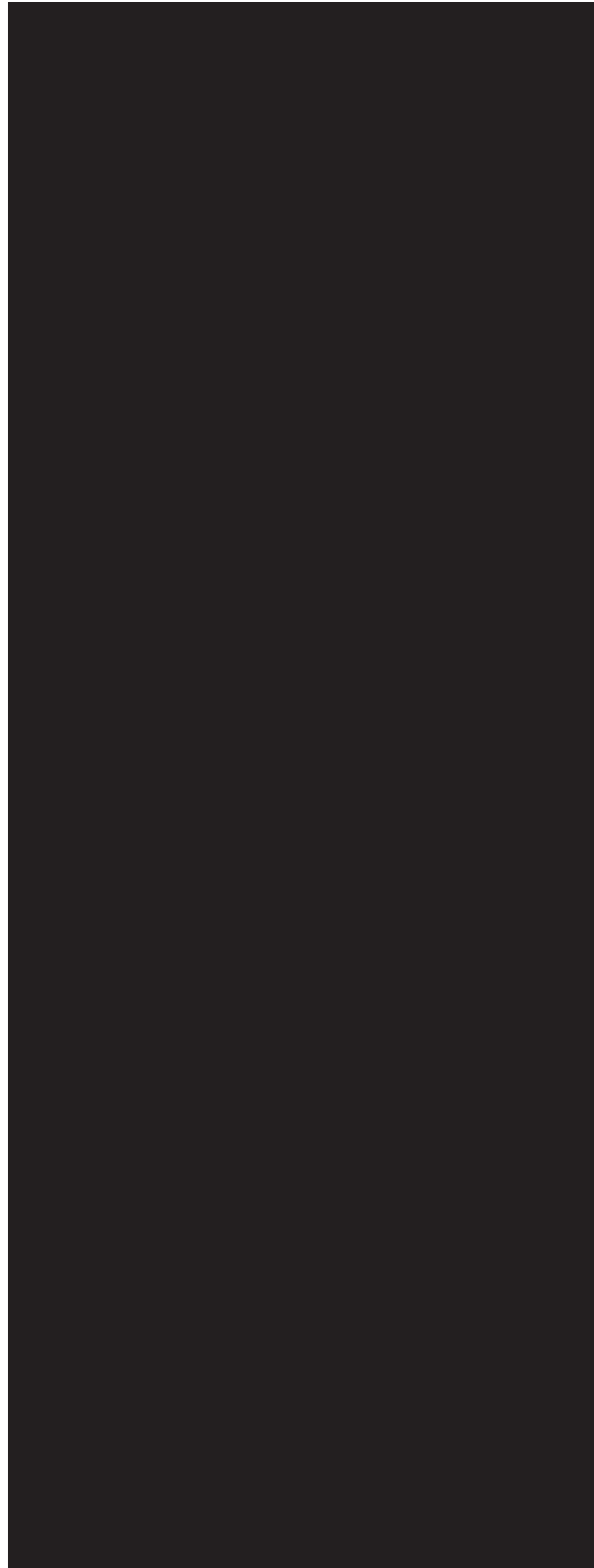
CHOCOLATE TEAK



VINTAGE TEAK



The aesthetic appeal of teak wood comes from straight grain patterns coupled with a rich golden-brown colour. Added to this beauty is its long lasting capability that makes teak furniture appropriate for all ages. This durability is further increased by natural oil content that resists termites, fungal stains and also repels other insects that can destroy wood. Due to its very high density, teak wood does not decay and rot easily. And it remains unstained due to its inherent resistance to several alkaline and acidic agents. With its enduring beauty and allure, teak wood furniture is no doubt the best to touch, feel and see; imparting a truly refined style to your interiors.



EXOTIC TEAK (C)



MILANGE TEAK



WONDER TEAK



VENEER USED ON THE KITCHEN PANEL: WONDER TEAK & CHOCOLATE TEAK

ENCHANTED

An ode to the finest craftsmanship, these veneers are carefully processed to bring out the elegance of their patterns and textures.

Maintaining synergies across large projects, their exquisite design patterns make your interiors enchantingly gorgeous.



WEATHER BACOTE



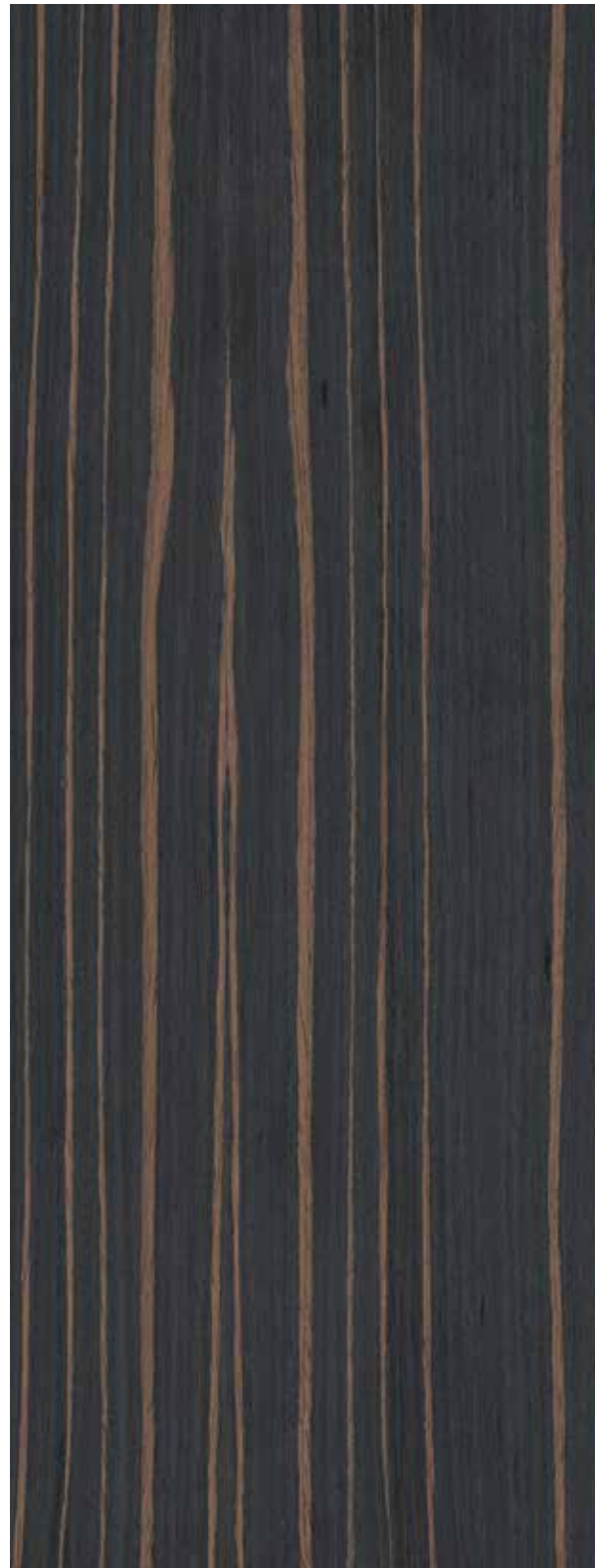
BUSHFIRE BACOTE



SAPPY BACOTE



GREY BACOTE



MACASSAR EBONY



CUBA EBONY





VENEERS USED ON THE COUNTER, THE WALL & PANEL: CANYON EBONY, MACASSAR EBONY & AMERICAN CHERRY



CANYON EBONY



WONDEROUS WENGE



LEONE WENGE



ROYAL WENGE



TREACLE WENGE (C)



ELEGANT MARBAU



GREEK EBENTOS



CORAL ZEBRANO



VENEER USED ON THE CABINET: CYPRUS OAK



SAMOA ZEBRANO



CYPRUS OAK





IN WOODWORKING, VENEERS REFER TO THIN SLICES OF WOOD, USUALLY THINNER THAN 3 MM (1/8 INCH), THAT ARE TYPICALLY GLUED ONTO ONE ANOTHER TO PRODUCE FLAT PANELS SUCH AS PLYWOOD, DOORS, CABINET TOPS AND PARTS OF FURNITURE. A VENEER IS OBTAINED BY "PEELING" THE TRUNK OF A TREE OR BY SLICING RECTANGULAR BLOCKS OF WOOD. THE APPEARANCE OF GRAINS AND FIGURES IN THE VENEER COMES FROM SLICING THROUGH THE GROWTH RINGS OF A TREE AND DEPENDS UPON THE ANGLE AT WHICH THE WOOD IS SLICED. EACH SLICING PROCESS GIVES A VERY DISTINCTIVE TYPE OF GRAIN, DEPENDING UPON THE TREE SPECIES. IN ANY OF THE VENEER-SLICING METHODS, WHEN THE VENEER IS SLICED, A DISTORTION OF THE GRAIN OCCURS. AS IT HITS THE WOOD, THE KNIFE BLADE CREATES A "LOOSE" SIDE WHERE THE CELLS HAVE BEEN OPENED UP BY THE BLADE, AND A "TIGHT" SIDE.

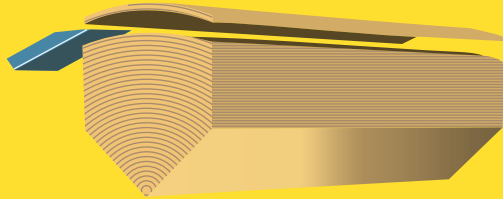
VENEERING IS AN ANCIENT ART, DATING BACK TO THE ANCIENT EGYPTIANS WHO USED VENEERS ON THEIR FURNITURE.

SONEAR CONTINUES THIS ANCIENT PRACTICE WITH MODERN TECHNOLOGY AND CONTEMPORARY INNOVATIONS TO SOURCE THE BEST VENEERS FROM THE MOST EXOTIC FORESTS TO ADD SOUL AND BEAUTY TO YOUR INTERIORS.

CUTS USED TO CREATE A VENEER

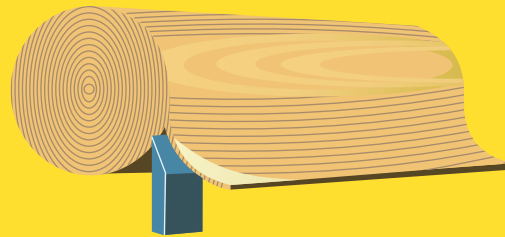
THE SIZE OF THE LOG, THE SPECIES OF WOOD, THE GRAIN PATTERN DESIRED AND OTHER FACTORS DETERMINE WHICH TYPE OF CUT WILL BE MADE TO CREATE VENEER. BELOW ARE SOME OF THE METHODS OF CUTTING LOGS:

HALF ROUND SLICING



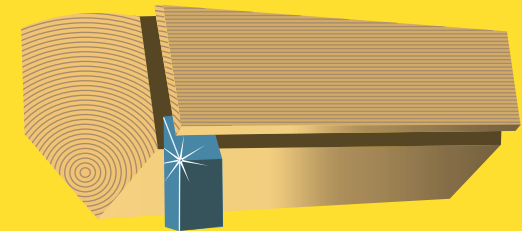
SLICED ON AN ARC PARALLEL TO THE CENTER OF THE LOG, THIS CUT ACHIEVES A FLAT-CUT VENEER APPEARANCE.

ROTARY CUT



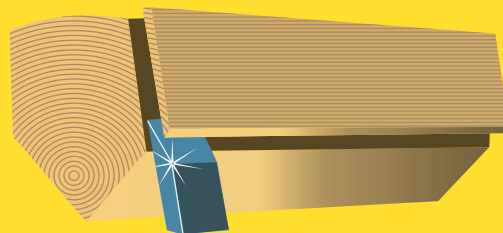
THE LOG IS CENTERED ON A LATHE AND TURNED AGAINST A BROAD CUTTING KNIFE SET INTO THE LOG AT A SLIGHT ANGLE.

QUARTER SLICING



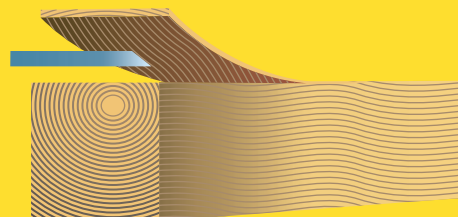
THE SLICING IS MADE PERPENDICULAR TO THE ANNUAL GROWTH RINGS OF THE TREE. THIS CREATES A STRAIGHT GRAIN APPEARANCE.

RIFT CUT



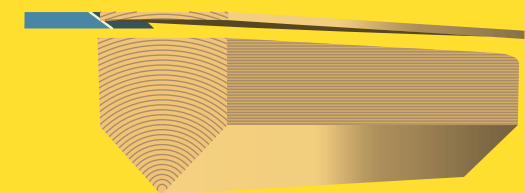
THIS STRAIGHT GRAIN CUT IS DERIVED BY SLICING RED AND WHITE OAK AT A SLIGHT ANGLE TO MINIMIZE THE IRREGULARITIES IN THE WOOD.

LENGTH WISE SLICING



THIS IS DONE FROM A BOARD OF FLAT SAWN LUMBER RATHER THAN FROM A LOG. A VARIEGATED FIGURE IS CREATED WITH THIS SLICE.

PLAIN SLICING



BY SLICING PARALLEL TO THE CENTER OF THE LOG, A RAISED "CATHEDRAL EFFECT" IS FORMED BY THE INNERMOST GROWTH RINGS.

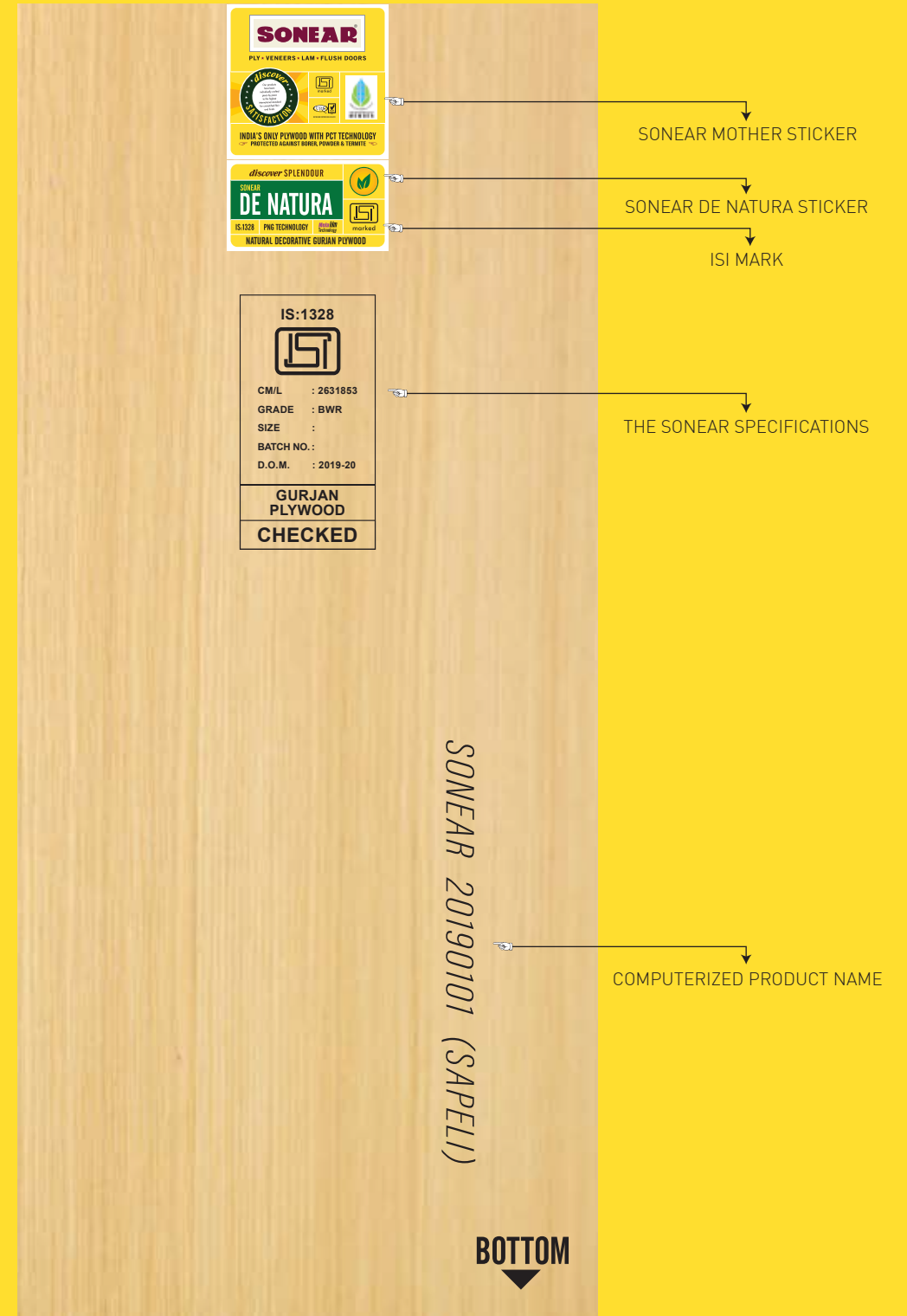
INDEX OF LAYOUT

NAME	PAGE NO.	NAME	PAGE NO.	NAME	PAGE NO.	NAME	PAGE NO.
AFRICAN EBONY	39	CORAL ZEBRANO	66	OLIVE ASH	42	SMOKE EUCALYPTUS POMELLE	25
AFRICAN MAHOGANY	39	CUBA EBONY	62	PACIFIC ANGELIM	52	SAPALI POMELLE	27
AFROMOSIA (C)	47	CYPRUS OAK	67	PLATINO KNOTTY PINE	13	SMOKE GONZALO ALVES	21
AFROMOSIA (Q)	51	DANIELLA	40	PRECIOUS BEECH	53	SMOKE GREEK EBONY	19
AMBER WOOD	14	DEBETU	52	RED CEDAR	53	SMOKE GRISARD	21
AMERICAN WALNUT (Q)	41	DUSKY WALNUT	39	RED ELM	41	SMOKE JATOBA	23
AMERICAN CHERRY	43	EBIARA	46	RED ELM (C)	45	SMOKE KNOTTY LARCH	30
AMERICAN MAPLE	48	EBONY	4	RED GUM	48	SMOKE KNOTTY PINE	18
AMERICAN WALNUT (C)	41	ELEGANT MARBAU	65	RED OAK	49	SMOKE LARCH	18
ANIGRE	50	ETIMOE	40	RED OAK (C)	49	SMOKE MAKORE	18
APPLE TREE	38	EUCALYPTUS POMELLE	29	ROSE WOOD	45	SMOKE OAK	17
ASH BURL	1	EXOTIC TEAK (C)	58	ROYAL TEAK	37	SMOKE RED ELM	22
AZZARO IPE (C)	35	FIGURED ANIGRE	26	ROYAL WENGE	64	SMOKE RUGGED EUCALYPTUS	31
AZZARO IPE (Q)	38	FIGURED ASH	26	ROYAL WHITE EBONY	5	SMOKE RUGGED OAK	31
BACOTE	3	FIGURED CURUPIXA	28	RUSTIC ROSEWOOD	32	SMOKE SAPALI (Q)	17
BAMBOO	52	FIGURED DANIELLA	28	RUSTIC SMOKE OAK	32	SMOKE SILVER OAK	19
BLACK & WHITE EBONY	52	FIGURED EUCALYPTUS	28	RUSTIC WALNUT	30	SMOKE WALNUT	19
BRAZILIAN LACEWOOD	55	FIGURED SYCAMORE	26	SAMOA ZEBRANO	67	SPADE GOTHIC POMELLE	8
BRAZILIAN ROXINIO	46	GLAZED AUBURN	14	SANTOS PALISSANDRE	4	SPADE MIDNIGHT GLORRY	7
BROWN RHINESTONE	15	GOLDEN CEDAR	46	SAPALI (C)	42	STEAM BEECH	50
BUBINGA (Q)	55	GOLDEN MAPLE	48	SAPALI (Q)	36	SUCUPIRA	36
BUBINGA POMELLE	29	GONZALO ALVES	55	SMOKE FIGURED EUCALYPTUS	29	SYCAMORE	48
BURNT DEVILS KITCHEN	6	GREEK EBENTOS	65	SAPGUM	43	TAVERI	51
BURNT ENCHANTED SLAB	11	GREY BACOTE	61	SAPPY BACOTE	61	TINEO	43
BURNT JUNGLI SHER (H)	10	HAZELNUT SHORE LINE (H)	10	SILVER OAK	40	TREACLE WENGE (C)	65
BURNT ROASTED POMELLE	8	JATOBA	55	SLATE FEROCIOUS BURL	9	TULIP	49
BURNT VINTAGE BRONZE	7	KNOTTY PINE	37	SLATE ITALIAN GROOVES	12	VINTAGE TEAK	57
BUSHFIRE BACOTE	61	KOTO	46	SLATE PERYLENE SLAB	11	WALNUT BURL	1
CANYON EBONY	63	LEONE WENGE	64	SLATE ROYAL GLORRY	7	WEATHER BACOTE	60
CARABIAN EXOTIC BURL	9	LIVE TREE	33	SMKOE RED CEDAR	22	WENGE (C)	42
CARABIAN MONTEGO SHEEN	8	LOURO PRETO	5	SMOKE AFROMOSIA (C)	21	WENGE (Q)	41
CARABIAN VINTAGE KNOTTS	13	MAHOGANY CROTCH	2	SMOKE BUBINGA	22	WHITE BEECH	50
CHARCOAL DOVE BURL	9	MACASSAR EBONY	62	SMOKE CHERRY	22	WHITE OAK (C)	47
CHARCOAL MAJESTIC GREY	12	MAKORE	43	SMOKE CHESTNUT	23	WHITE OAK (Q)	49
CHARCOAL RIVERA (H)	10	MAPPA BURL	53	SMOKE DANIELLA	21	WONDER TEAK	58
CHEN CHEN	51	MERCURY MOUNTAIN TIGER	6	SMOKE DEBETU (C)	23	WONDEROUS WENGE	64
CHESTNUT	38	MILANGE TEAK	58	SMOKE DUSKY WALNUT	20	ZEBRANO	45
CHOCOLATE TEAK	57	MOCHA URBAN GLACIA	11	SMOKE EBENTOS	2	ZIRICOTE	3
CIGAR FIGURED BAVARIAN	12	MYANMAR TEAK	56	SMOKE EBIARA	20		
CIGAR URBAN WOOD	13	RUGGED OAK	31	SMOKE ETIMOE	20		
CIGAR WAVY BRONZO (H)	10	OCHRE GRAVE	15	SMOKE EUCALYPTUS	16		



THE ORIGINAL SONEAR IDENTITY

CHECK TO GET THE QUALITY FOR LIFE





SONEAR®

PLYWOOD * VENEERS * FLUSH DOORS

Corporate Office: 20 NWA, Punjabi Bagh (West), Club Road, New Delhi - 110026
T: + 91 - 11 - 45021000, 45021028, E: info@sonearply.com, W: www.sonearply.com

follow us on: [f https://www.facebook.com/sonearply](https://www.facebook.com/sonearply) [in http://www.linkedin.com/company/sonearply](http://www.linkedin.com/company/sonearply) [t https://twitter.com/sonearplywood](https://twitter.com/sonearplywood)